

CLEVELAND PHOTO + FILMING LOCATION GUIDE

Please note: Access to electricity and other needs to be determined by location contacts

DOWNTOWN CLEVELAND



Rock & Roll Hall of Fame: The Rock & Roll Hall of Fame tracks the evolution of this musical and cultural phenomenon through more than 50 exhibits. The legacy embodied in the anthem “Cleveland Rocks!” lives on in the words “Long Live Rock” carved into the stone front plaza of the Rock Hall. **For interior visuals or plaza stand-ups, contact Shauna Wilson at 216.515.1215.*



Cleveland sign at North Coast Harbor: The script Cleveland sign at North Coast Harbor provides the perfect visual of Cleveland’s lakefront skyline, the Rock & Roll Hall of Fame and the Great Lakes Science Center in one shot. **Public access shot*



Flats East Bank: The redeveloped waterfront complex visually tells the story of downtown Cleveland’s transformation into a place where people work, live and play, exploiting the assets of the Cuyahoga River and Lake Erie, with restaurants, entertainment, recreation, a 1,200-foot boardwalk and unbeatable views.

**Public access shot*



Cleveland sign at The Foundry: The script Cleveland sign at the riverbank by The Foundry, a community rowing and sailing center, provides a unique skyline visual of Cleveland – and a wide shot includes a glimpse of Progressive Field. ***Contact The Foundry at 440.596.7069.*



Heinen's Fine Foods: Heinen's Grocery Store is the first full-service supermarket in Cleveland's central business district. But much more than an urban grocer, it's a symbol of downtown's renewal, and a place to meet, greet and eat for those who work, live and play in Cleveland. A century ago, it was a center of commerce. Now it's a dining destination. With its Tiffany-style stained glass dome atop a 60-foot high rotunda, the Cleveland Trust Bank building is on the National Register of Historic Places. *For interior visuals, contact Kathryn Falls at 216.475.2300, ext. 2278.*



Professional Sports: Cleveland is home to three professional sports teams – the Cleveland Indians (MLB), Cleveland Cavaliers (NBA) and the Cleveland Browns (NFL). All three sports facilities, Progressive Field, Rocket Mortgage FieldHouse and FirstEnergy stadium are easily accessible and conveniently located in Downtown Cleveland.

**Public access shot*



East Fourth Street: This narrow brick street is the perfect visual display of the relaxed lifestyle that has attracted new residents and visitors to downtown Cleveland. It's walkable and packed with upscale eateries and entertainment, including the House of Blues and award-winning restaurants like Chef Michael Symon's Lola and Mabel's BBQ and Jonathon Sawyer's The Greenhouse Tavern. A popular location before and after big games in Cleveland.

**Public access shot*



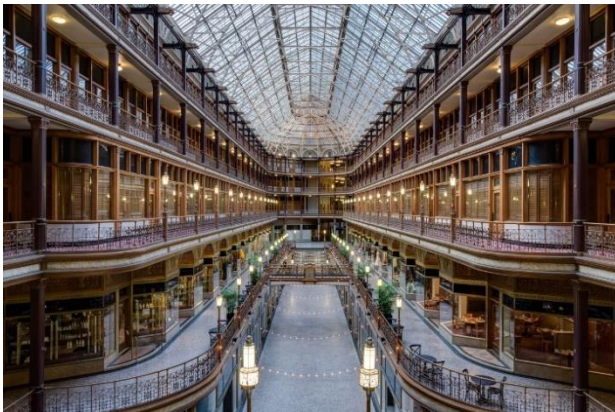
Playhouse Square: Playhouse Square is the largest performing arts center outside of New York City and consists of a collection of 10 performance spaces, including five theaters restored to their original 1920s elegance. Playhouse Square is also the world's largest theater restoration project. *For interior visuals, contact Cindi Szymanski at 216.640.8860.*



North America's Largest Outdoor Chandelier: Visitors are welcomed to Playhouse Square by a 20-foot-tall, 8,500-ton outdoor chandelier – the world's largest – glittering with 4,200 crystals.
**Public access shot*



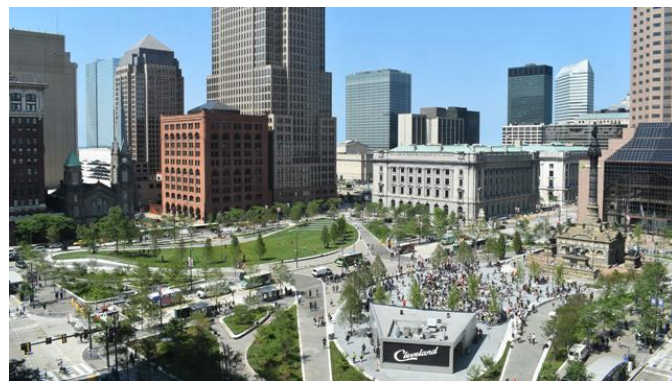
Fountain of Eternal Life: Public art located in Downtown Cleveland, also known as the War Memorial Fountain and Peace Arising from the Flames of War, paying tribute to Greater Clevelanders who served, died or were declared missing in military service. The centerpiece is a 35-foot bronze figure representing man escaping from the flames of war and reaching skyward for eternal peace.
**Public access shot*



The Arcade: Located in the Gateway District in Downtown Cleveland, The Arcade was considered one of the first indoor shopping malls. The stunning architecture of the building provides a look at a Victorian-era structure that was built in 1890. *For interior visuals, contact Angela Flood at 216.575.1234.*



Public Square: The heart of Downtown Cleveland underwent a \$50 million "transplant" in 2016, adding to the walkability and pedestrian-friendliness of Public Square. The renovated area provides public space for concerts, movies, farmers markets and other events. The redesign includes a café, a splash zone during the summer and an ice rink during the winter. **Public access shot; contact 216-503-8103 for details.*

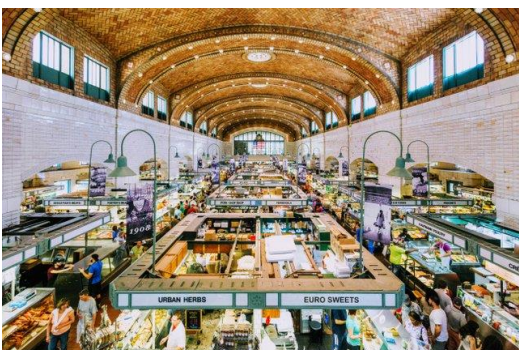




Free Stamp: For a unique visual in Downtown Cleveland, look no further than the Free Stamp in Willard Park. This piece of Public art is the “world’s largest rubber stamp.”

**Public access shot*

OHIO CITY NEIGHBORHOOD



West Side Market: Built in 1912, the West Side Market is one of the largest indoor/outdoor markets in the country. This marketplace provides great visuals of Cleveland’s Ohio City neighborhood and food scene. It was once where turn-of-the-century immigrants found their native foods and spices. Today, it features vendors with the freshest selection of fruits, vegetables, meats, dairy, produce, baked goods, ethnic foods and international delicacies. **For interior visuals, contact the Manager’s Office at 216.664.3387.*



Mitchell’s Production Facility and Ice Cream Parlor: Mitchell’s Ice Cream bought a building in the Ohio City neighborhood that was once a vaudeville showplace and dance club, and turned it into an ice cream factory and parlor that helped to revitalize one of the hottest urban neighborhoods in Cleveland. *For interior visuals, contact Hailey Hanahan or call 216-861-2687 x116.*



Craft beer economy: Cleveland makes the top ten lists of best beer cities because of the craft beers, microbrewers and beer enthusiasts driving the growth of new pubs and entertainment venues. Forbes magazine calls it “economic development through beer.” From the first craft brewery in Ohio, Great Lakes Brewing Company, to the new generation of brewers, there’s a concentration of brewing and tasting and enjoying in Ohio City and other urban neighborhoods. *For interior visuals at Great Lakes Brewing Co., contact Marissa DeSantis at 216.325.0226. For interior visuals at Market Garden Brewery, contact Sam McNulty at 216.650.3583. For interior visuals at Platform Beer Co., contact Paul Benner at 440.539.3245.*



John Heisman Birthplace: The [birthplace of John Heisman](#), the namesake of the college football trophy, is located in the Ohio City neighborhood at 3928 Bridge Ave. A [historical marker](#) that stands at 2825 Bridge Ave. honors the coach and game innovator as the father of the forward pass, dividing game into quarters, statistical score board and quarterback's "hike" or "hep" to initiate plays.

TREMONT NEIGHBORHOOD



"A Christmas Story" House: Relive "A Christmas Story" at Ralphie's actual house used in the film. Visitors can see Ralphie and Randy's house restored to its big screen look with props like the "fra-gee-lay" leg lamp and the iconic Red Ryder BB gun. *For interior visuals, contact 216.298.4919.



Cleveland sign: The script Cleveland sign at 1430 Abbey Avenue provides a great backdrop of Cleveland's skyline, bridges and Cuyahoga River valley. * Contact Cleveland Metroparks at 216.635.3304.

DETROIT SHOREWAY NEIGHBORHOOD



Edgewater Park: Located in the Lakefront Reservation of the Cleveland Metroparks, Edgewater Park features two beaches and magnificent views of Downtown from its 6,000 feet of shoreline. Visitors can also stop by for a photo opp by the Cleveland script sign. * Contact Cleveland Metroparks at 216.635.3304.



Gordon Square Arts District: The reopening of the iconic Capitol Theatre (a 1920s movie palace shuttered for 25 years) as part of a \$30 million capital campaign in streetscape beautification spawned a neighborhood revival, with more than 80 new businesses and a half-billion dollars of private investment underway. It's a model example of creative placemaking that leverages a community's assets (including vibrant arts and culture) to spur economic development and it has created one of Cleveland's hottest neighborhoods. **Public access shots*

HOUGH NEIGHBORHOOD

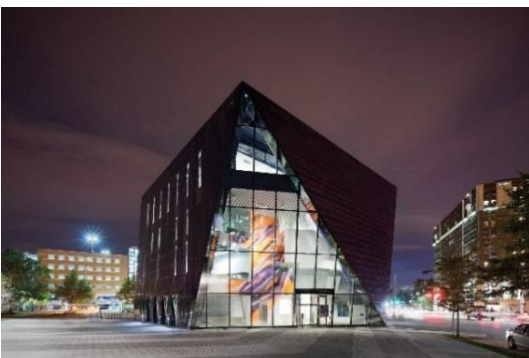


League Park & Baseball Heritage Museum: Step onto the field and into the restored ticket booth of one of the oldest ballparks in the world. The museum features exhibits and rare memorabilia from some of baseball's greatest players like **Babe Ruth**, **Bob Feller** and **Joe DiMaggio** and presents the rich history and diversity of baseball with programs, uniforms, signed baseballs and other keepsakes from various Latin and Women's leagues and the championship Negro League Buckeyes. ** For interior visuals, contact Margaret Reardon at 216.789.1083*

UNIVERSITY CIRCLE NEIGHBORHOOD



Cleveland Museum of Art & Wade Lagoon: The 100-year-old Cleveland Museum of Art has embraced the digital age with its tech-forward ARTLENS Gallery, which contains the Collection Wall that displays all of the art in the museum, as well as the "interactive, touch-screen "lenses" that give visitors the chance to "paint" and "sculpt." The museum's 1916 building is the backdrop for the lagoon at Wade Park. **Contact Caroline Guscott or Kelley Notaro Schreiber at 216.707.2261.*



Cleveland Museum of Contemporary Art: For a visual of Cleveland's growing *neighborhoods* and arts and culture scene, the Cleveland Museum of Contemporary Art is a unique structure in the Uptown area of University Circle. The four-story building rises 60 feet from a hexagonal base to a square top and is clad primarily in mirror-finish black stainless steel – reflecting its urban surroundings and changing in appearance with differences in light and weather. **For interior visuals, contact Tom Poole at 216.421.8671.*



Severance Hall: The home of the Cleveland Orchestra, was built 85 years ago by John Severance to honor his late wife. Known as one of the most beautiful concert halls in the world, the building received the Honor Award by the National Trust for Historic Preservation. **For interior visuals, contact Justin Holden at 440.231.7476.*



Western Reserve Historical Society: Located at the Western Reserve Historical Society is the restored Grand Carousel from the former Euclid Beach amusement park. Guests can take a ride on the fully functioning carousel. **For interior visuals, contact Angie Lowrie at 216.721.5722 ext. 1402.*



Cleveland Cultural Gardens: The Cleveland Cultural Gardens are unique in the world, providing a visual of the ethnic melting pot that comprises the city of Cleveland. The gardens span over 254 acres in the University Circle neighborhood featuring 33 ethnicities/nationalities. **Public access shot*



Cleveland Museum of Natural History: Visuals include the famous fossil “Lucy” (pictured left) – a 3.2-million-year-old early human; Cleveland icon “Steggie,” the sculpture of a Stegosaurus dinosaur that has served as the museum unofficial greeter for nearly 50 years; the Shafran Planetarium and Mammoth and Mastodon Sculptures Wall. **For interior visuals, contact the museum at 216.231.4600.*